

Common Hot Keys	
Hot Key	Function
F4	collapse active drop-down list
Esc	collapse active drop-down menu/list close active wizard/dialog box cancel selection and collapse
Up/down arrows	navigate up/down active drop-down list
Page up/down	navigate to top/bottom of active drop-down list
Enter	collapse active drop-down list
F11	toggle full screen view on/off
F12	toggle display elements on/off
Page	
Ctrl + t	open new page (template selector)
Ctrl + w	close active page
Ctrl + Tab	activate next page (for pages in main Integrated Canvas window only; does not affect detached pages)
Ctrl + #	activate selected page number (e.g. Ctrl+1 activates page 2)

Cursors and Hints				
Hot Key	Function	3D Canvas	Section	BaseMap
Alt		√	√	√
Esc	toggle active tool/view	√	√	√
c	toggle between	√	toggle between digitizing and select tool	
r	switch hint location		√	
l	lock color bar	√		√
o	enable/disable object hint	√	√	√

Hot Key	Function
Pie Menu	
Enter	execute highlighted action or tool
Right/down arrow	move highlighted action or tool cw
Left/up arrow	move highlighted action or tool ccw
Spacebar	open/close pie menu
Backspace	close pie menu

3D View Manipulation (3D Canvas)	
Hot Key	Function
i	toggle seismic volume interpolation mode
Shift + F9	rotate view 90° cw
F9	rotate view 90° ccw
Shift + x	change cursor display type
Shift + p	show previous domain
Shift + up	switch single mode up
Shift + down	switch single mode down
Ctrl + l	set lock mode for well logs
Shift + f	freeze (magnify viewer)
z	hide object under cursor
Shift + z	redisplay last hidden object
F1	top view
F2	bottom view
F3	front view
F4	back view
F5	left view
F6	right view
F7	oblique view
F8	North up view
F9	rotate view 90° ccw
F10	rotate view 180° ccw-cw
r	restrict interpretation to visible seismic

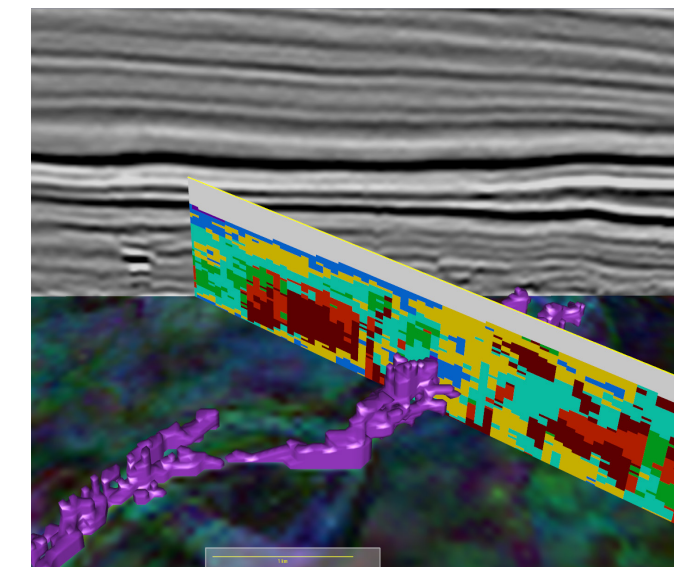
2D View Manipulation			
Hot Key	Function	Section	BaseMap
Ctrl + m	toggle magnifier on/off	√	√
Plus	zoom in	√	√
Minus	zoom out	√	√
m	toggle merge attributes view		√
l (L)	flip section orientation	√	
w	toggle wiggle mode in magnifier	√	

Seismic Selection (BaseMap)	
Hot Key	Function
Use with Line Selection tool	
Click	2D & 3D line segment selection
Shift + click	Select gather
Middle-click	Remove last segment

Seismic Manipulation				
Hot Key	Function	3D Canvas	Section	BaseMap
Ctrl + b	create block	√		
a	activate seismic block under cursor	√		
t	toggle seismic, section & block annotation	√		
e	hide seismic while in movie mode	√		
Shift + s	stop animation	√		
Shift + r	toggle 2D section frame	√		
PGUp	enlarge manipulator handles	√	move to next line	single step forward
PGDn	shrink manipulator handles	√	move to previous line	single step back
n/p	next/previous seismic volume	√	√	
Dot	forward tab	√	√	
0	back tab	√	√	
1	backward step	√	√	
3	forward step	√	√	
4	fast back	√	√	
5	pause	√	√	
6	fast forward	√	√	
7	inline	√	√	
8	xline	√	√	
9	z-slice	√	√	
Up arrow		inline tab step (back)	tab step forward	VCR line selection
Down arrow		inline tab step (forward)	tab step back	VCR line selection
Left arrow		xline tab step (back)	fast backward	
Right arrow		xline tab step (forward)	fast forward	
Ctrl + up		z-axis tab step (arrow up)	shift view down	
Ctrl + down		z-axis tab step (arrow down)	shift view up	
x	toggle 2D intersections	√	√	
v		open active 2D section from intersection	switch inline/xline at cursor	
Ctrl	open intersecting 3D/2D line in a new panel (use with Line Selection tool)		√	

Interpretation				
Hot Key	Function	3D Canvas	Section	BaseMap
Ctrl + e	toggle Propagator paintbrush erase mode	√		
Ctrl + p	Propagator paintbrush mode	√		
Shift + a	accept interpretation projection (manual interpretation)	√		
Backspace	delete last point while picking	√		
Alt + Backspace	delete entire segment while picking	√		
Shift + t	run FaultTrak on active fault	√		
w	toggle on/off Stop at Faults and Stop at Horizons	√		
n/p	next/previous seismic attribute map	√		
Ctrl + o	open interpretation	√	√	
Ctrl + f	create fault	√	√	
Ctrl + h	create horizon	√	√	
a	activate interpretation under cursor	√	√	
f	switch to active fault	√	√	
h	switch to active horizon	√	√	
d	toggle draw/erase	√	√	
s	toggle snap	√	√	
g	toggle guide/auto-guide picking	√		
Shift	lock rubber band to one end	√	√	
Ctrl + click	track left	√	√	
Ctrl + middle-click	track left and right	√	√	
Ctrl + right-click	track right	√	√	
b	break	√	√	
Ctrl + z	undo	√	√	√
Ctrl + y	redo	√	√	√
Ctrl + s	save modified interpretation	√	√	
u	toggle flattened/unflattened view	√	√	
q	close polygon	√	√	√
k	toggle horizon & fault labels			√
Delete	erase interpretation point		√	

Sub-volume detection and spectral decomposition attribute in Integrated Canvas



SeisEarth - Fast and accurate interpretation, from regional to reservoir

Interpretation				
In Edit Points Mode				
Hot Key	Function	3D Canvas	Section	BaseMap
Delete	erase points selected by the drawing tools			√
Ctrl + i	invert segment selection			√
Ctrl + a	select all			√
Ctrl + b	break/end drawing of polygons			√
Ctrl + d	double segment resolution			√
Shift + drag	move selected points w/o smoothing segment			√