

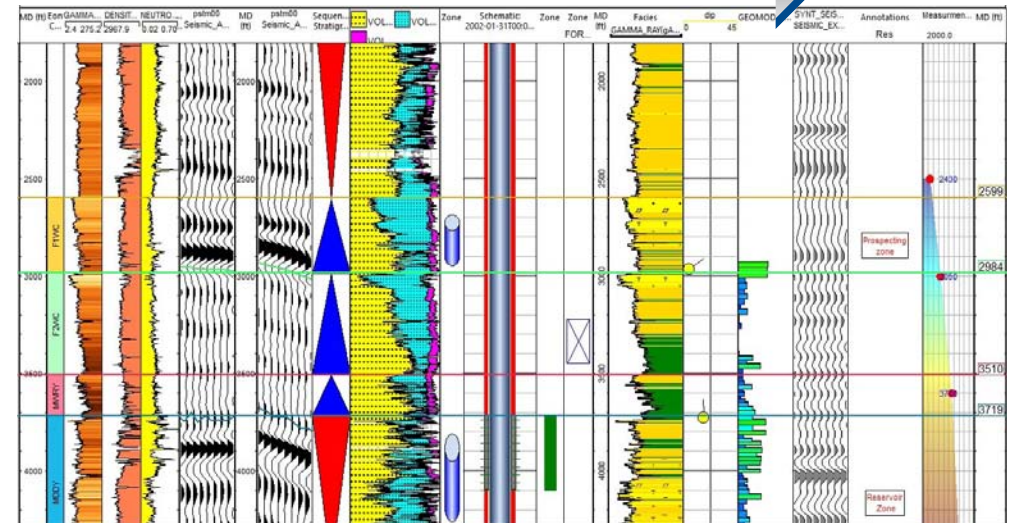
Paradigm™ 18 – G&G Interpretation - StratEarth™



Interpretation StratEarth	
Hot Key	Function
Spacebar	3D viewer: repeat last command
Esc	3D viewer: alternate between Get XYZ and View Movements
Plus	2D or 3D view: zoom in
Minus	2D or 3D view: zoom out
F1	3D viewer: top view
F2	3D viewer: bottom view
F3	3D viewer: front view
F4	3D viewer: back view
F5	3D viewer: left view
F6	3D viewer: right view
F8	3D viewer: North view
F9	3D viewer: pick center point
F10	2D or 3D view: global fit-to-view
F11	2D or 3D view: toggle full screen view on/off
F12	2D or 3D view: toggle display elements
Home	2D or 3D view: home location
PGUp	3D viewer: view from top
PGDn	3D viewer: view from North
2	3D viewer: rotate down
4	3D viewer: rotate right
6	3D viewer: rotate left
8	3D viewer: rotate up

StratEarth (2D Views)	
Hot Key	Function
S	select marker
A	create marker
R	relocate (move) marker
F	flatten on markers
Ctrl + F	search for objects
G	ghost logs and markers
D	delete selected marker
E	open style editor for selected item
Shift + F	flatten view at marker under cursor
Ctrl + Shift + F	open flatten section at markers dialog box
Alt + →	next step
Alt + ←	previous step
Shift + ↓, ↑, ←, or →	move ghost
Ctrl + ↓, ↑, ←, or →	resize ghost

Integrated display of well data in well section view



StratEarth - Geologic well correlation and cross-section construction for multi-disciplinary, cross-validation of interpretations.

www.emerson.com/paradigm

The Emerson logo is a trademark and service mark of Emerson Electric Co. Paradigm and/or other Paradigm products referenced herein are registered trademarks of one of the Emerson family of companies. All other marks are the property of their respective owners. © 2018 Emerson Electric Co. All rights reserved.